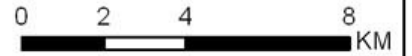


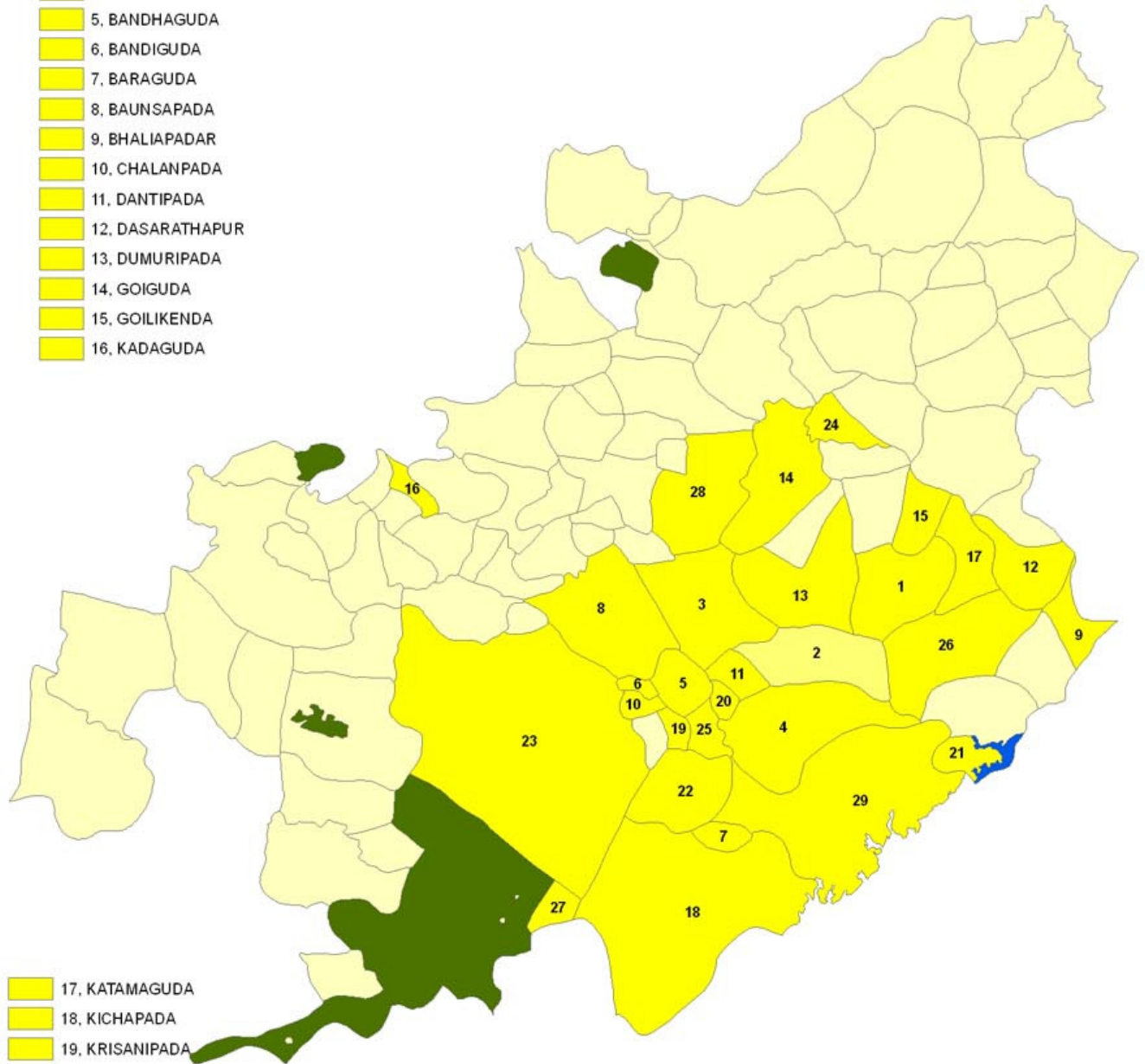


# KHAIRAPUT MALKANGIRI



**BONDA  
TRIBE**

- 1, ANDRAHAL
- 2, BADABEL
- 3, BADAPADA
- 4, BANDAPADA
- 5, BANDHAGUDA
- 6, BANDIGUDA
- 7, BARAGUDA
- 8, BAUNSAPADA
- 9, BHALIAPADAR
- 10, CHALANPADA
- 11, DANTIPADA
- 12, DASARATHAPUR
- 13, DUMURIPADA
- 14, GOIGUDA
- 15, GOILIKENDA
- 16, KADAGUDA



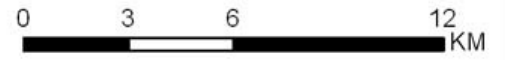
- 17, KATAMAGUDA
- 18, KICHAPADA
- 19, KRISANIPADA
- 20, MUDULIPADA
- 21, PATRAPUT
- 22, PINDAJANGAR
- 23, RAULGUDA
- 24, SANUGUDA
- 25, SILEIGUDA
- 26, SURENDRAPUR
- 27, TAGABEDA
- 28, TULAGURAN
- 29, TUSAIPADA

### LEGEND

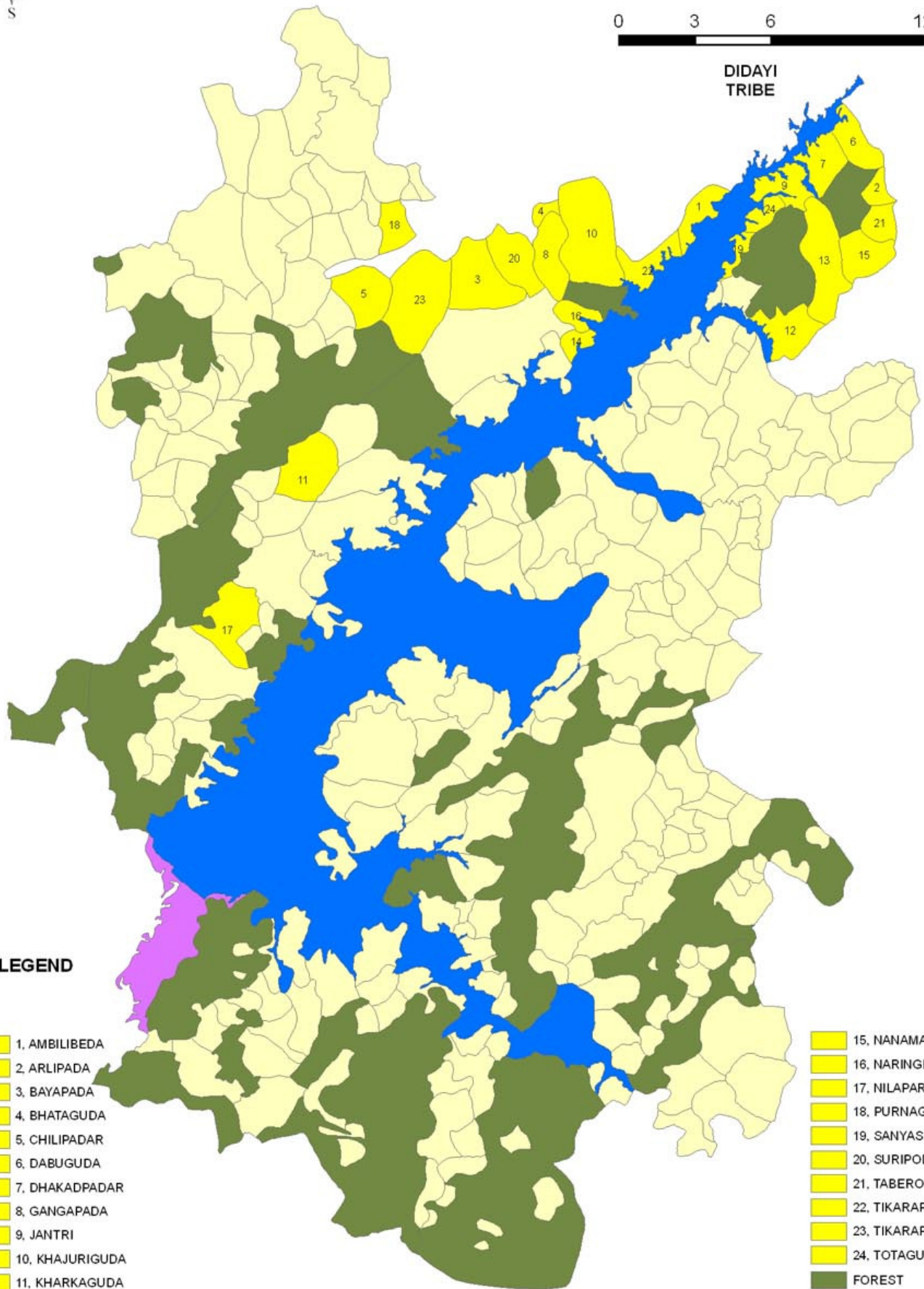
- FOREST
- RESERVOIR
- VILLAGE



# KUDUMULUGUMMA MALKANGIRI



DIDAYI  
TRIBE



## LEGEND

- 1. AMBILIBEDA
- 2. ARLIPADA
- 3. BAYAPADA
- 4. BHATAGUDA
- 5. CHILIPADAR
- 6. DABUGUDA
- 7. DHAKADPADAR
- 8. GANGAPADA
- 9. JANTRI
- 10. KHAJURIGUDA
- 11. KHARKAGUDA
- 12. KODIGANDHI
- 13. MARIVEDA
- 14. MUDUGULI

- 15. NANAMANJARI
- 16. NARINGIJHOLIA
- 17. NILAPARI
- 18. PURNAGUMA
- 19. SANYASIGUDA
- 20. SURIPODA
- 21. TABERO
- 22. TIKARAPADA
- 23. TIKARAPADA
- 24. TOTAGUDA
- FOREST
- RESERVOIR
- TOWN
- VILLAGE

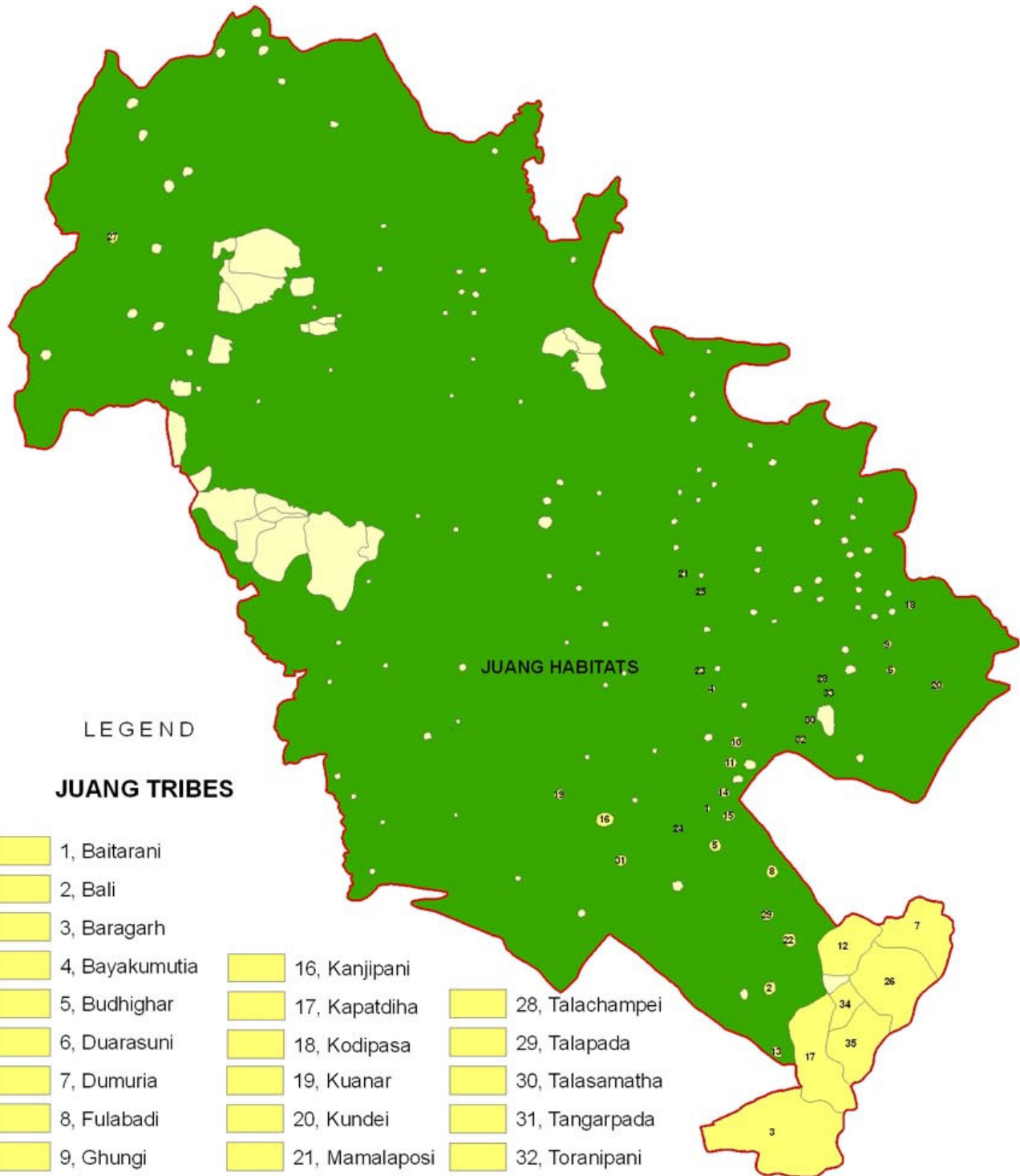
18°00'N

18°00'N



# BANSPAL KEONJHAR

## JUANG TRIBES



### LEGEND

#### JUANG TRIBES

- |                |                |                 |
|----------------|----------------|-----------------|
| 1, Baitarani   | 16, Kanjipani  | 28, Talachampe  |
| 2, Bali        | 17, Kapatdiha  | 29, Talapada    |
| 3, Baragarh    | 18, Kodipasa   | 30, Talasamatha |
| 4, Bayakumutia | 19, Kuanar     | 31, Tangarpada  |
| 5, Budhighar   | 20, Kundei     | 32, Toranipani  |
| 6, Duarasuni   | 21, Mamalaposi | 33, Uparachampe |
| 7, Dumuria     | 22, Panasanasa | 34, Bankuda     |
| 8, Fulabadi    | 23, Pandadar   | 35, Nadam       |
| 9, Ghungi      | 24, Raidiha    | Banspal block   |
| 10, Gonasika   | 25, Rugudi     | Forest          |
| 11, Guptaganga | 26, Saria      | Village         |
| 12, Hatisila   | 27, Talabarada |                 |
| 13, Jamudiha   |                |                 |
| 14, Jantari    |                |                 |
| 15, Kadalibadi |                |                 |

Villages are not shown in map

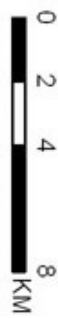
Kansta  
Temera  
Gad Gadei  
Remulighati  
Talaraduan



86°00'E

22°00'N

# JASHIPUR MAYURBHANJ HILL KADIA & MANKIRDIA TRIBE

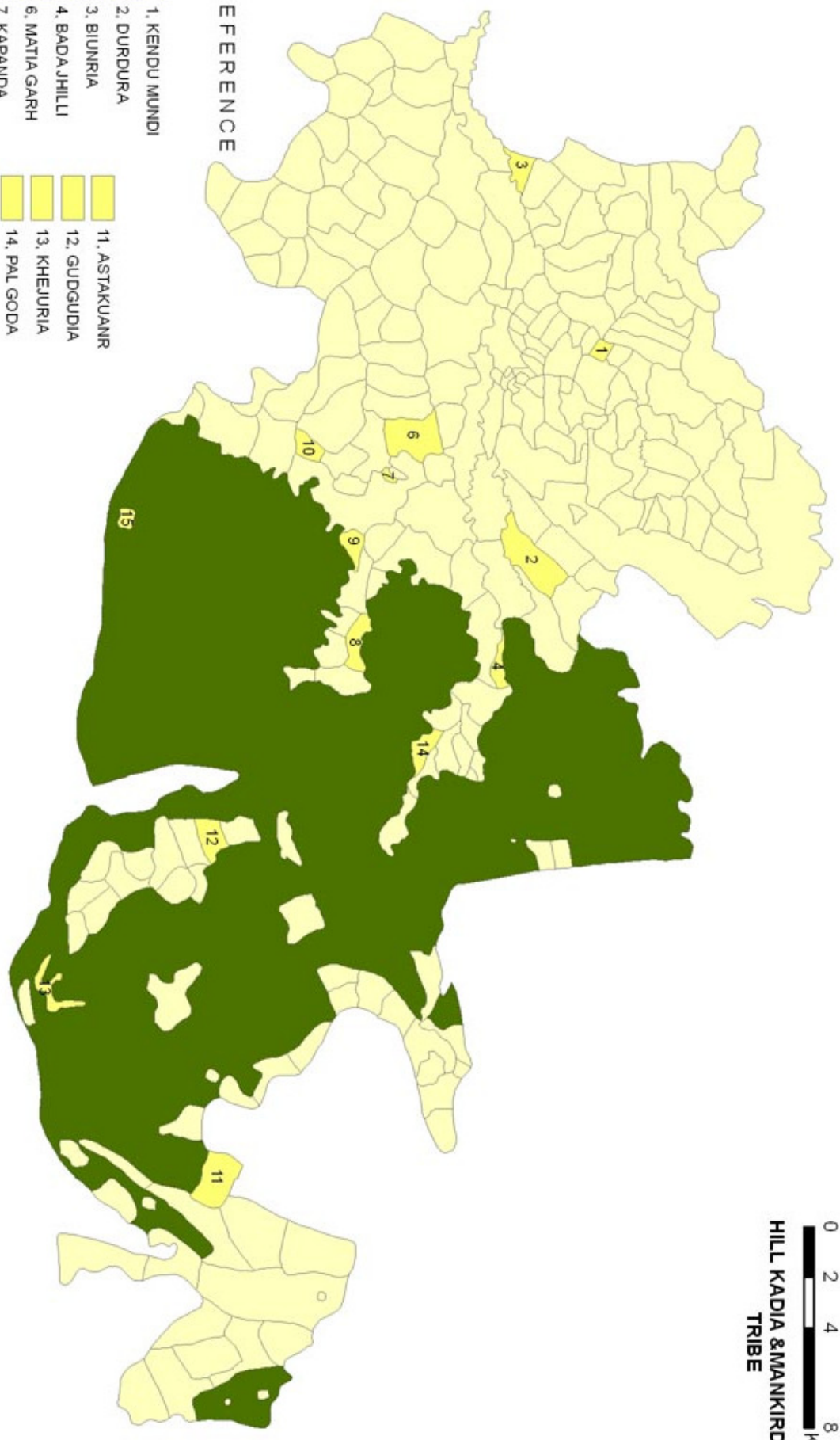


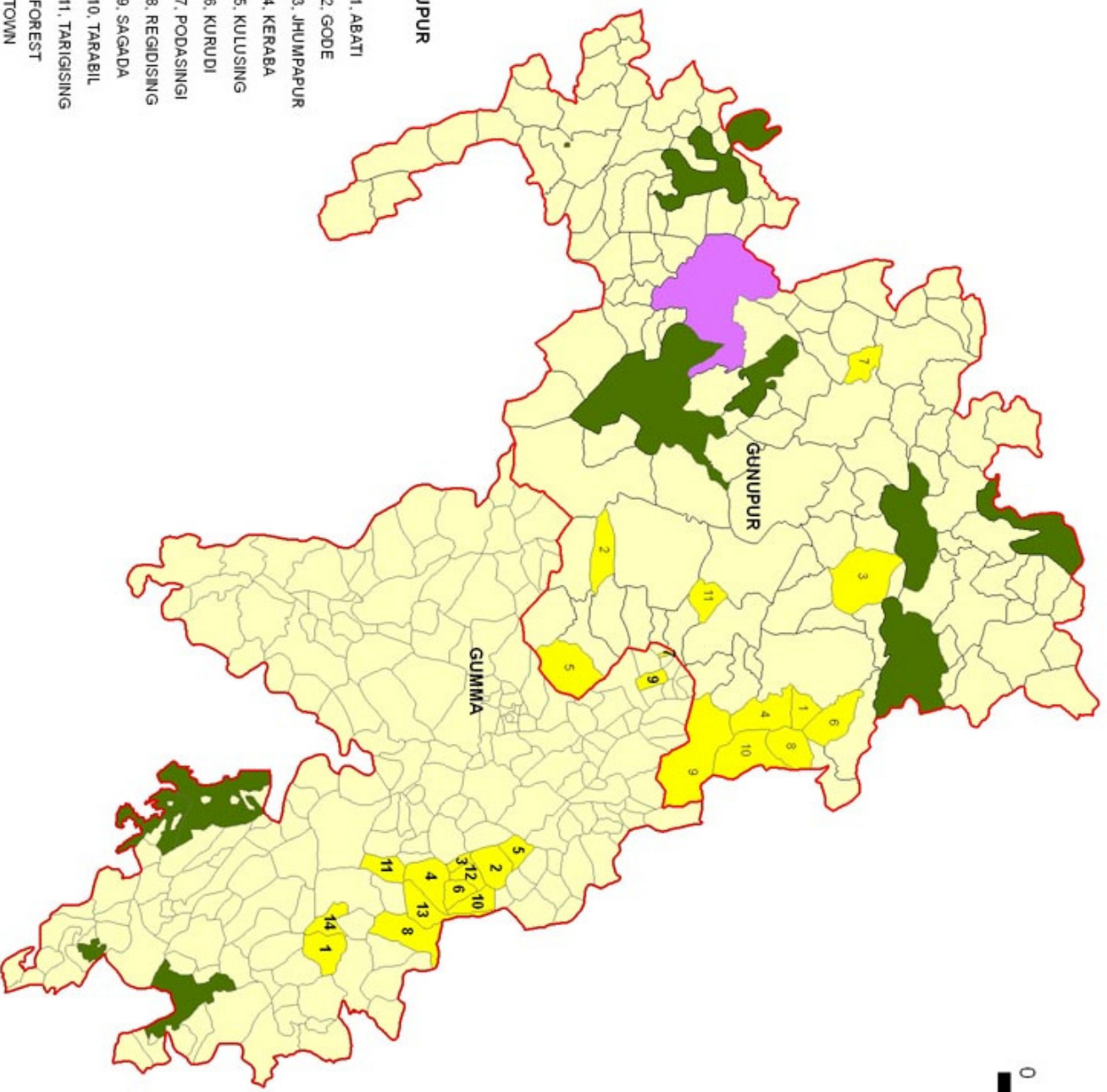
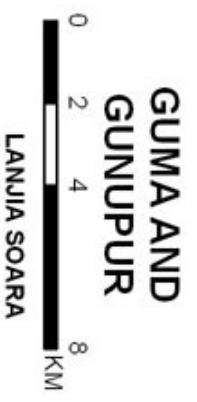
22°00'N

86°00'E

## REFERENCE

- |  |                |  |               |
|--|----------------|--|---------------|
|  | 1. KENDU MUNDI |  | 11. ASTAKUANR |
|  | 2. DURDURA     |  | 12. GUDGUDIA  |
|  | 3. BIUNRIA     |  | 13. KHEJURIA  |
|  | 4. BADA JHILLI |  | 14. PAL GODA  |
|  | 6. MATIA GARH  |  | 15. KIAJHARI  |
|  | 7. KAPANDA     |  | FOREST        |
|  | 8. THAKUR GODA |  | VILLAGE       |
|  | 9. PODAGARH    |  |               |
|  | 10. KUMUDABADI |  |               |





**REFERENCE**

**GUMA**

- 1. ADHEI
- 2. ANGADA
- 3. ARBUN
- 4. BANTALADA
- 5. BHOBANI
- 6. CHANGRADA
- 7. GADABAGORJANG
- 8. JANGTAR
- 9. KINDARU
- 10. KULPAT
- 11. LUARA
- 12. PUTUR
- 13. RUDHEI
- 14. TIBISINGA
- FOREST
- VILLAGE

**GUNUPUR**

- 1. ABATI
- 2. GODE
- 3. JHUMPAPUR
- 4. KERABA
- 5. KULUSING
- 6. KURUDI
- 7. PODASINGI
- 8. REGIDISING
- 9. SAGADA
- 10. TARABIL
- 11. TARIGISING
- FOREST
- TOWN
- BLOCK BOUNDARY

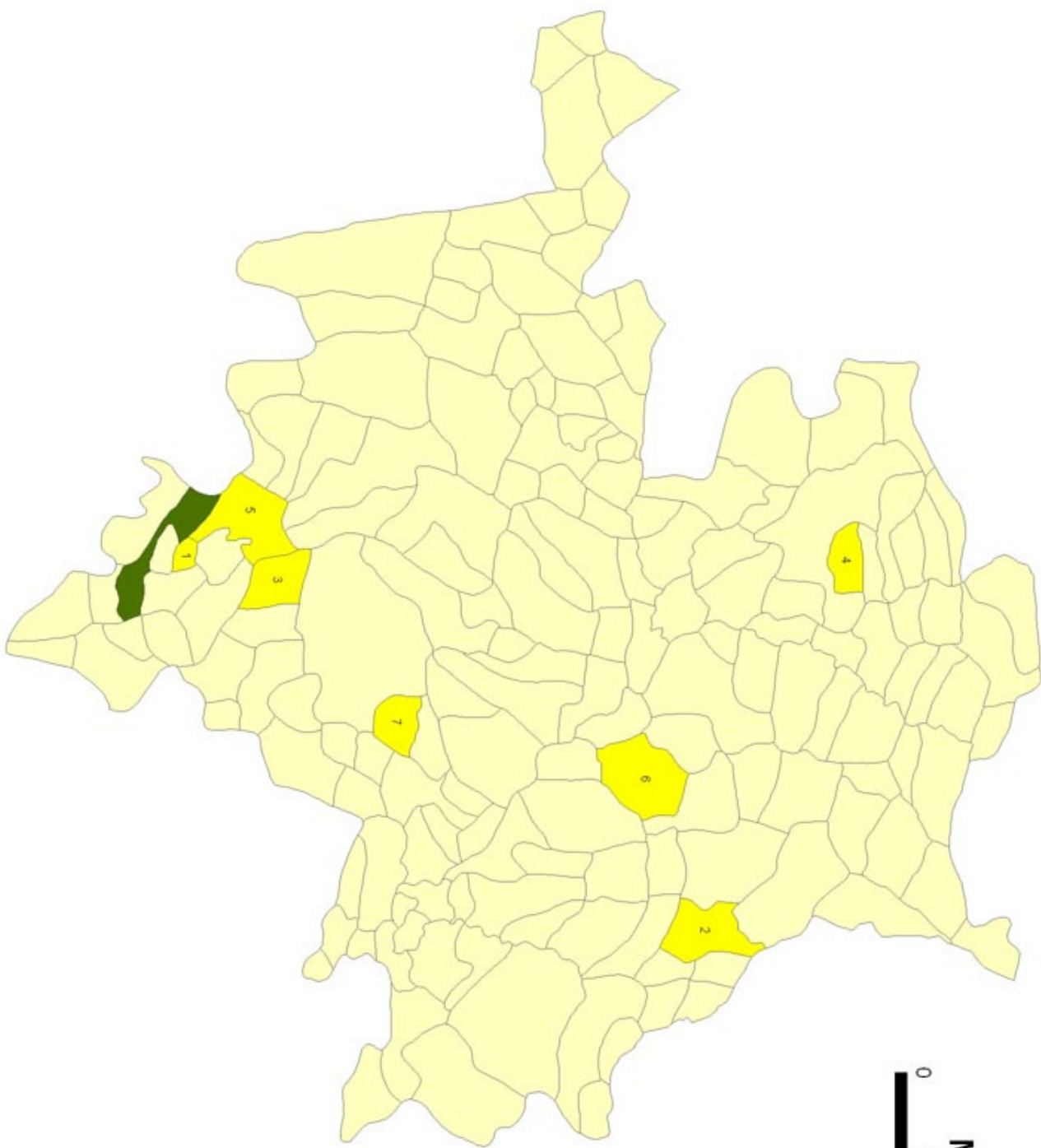
84°00'E

84°00'E

19°00'N

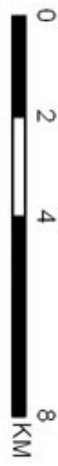
19°00'N

87°00'E



# MORDA MAYURBHANJ

LODHA  
TRIBE



## Legend

- 1. BHADRASUL
- 2. CHIKITAMATIA
- 3. DHOBANISOL
- 4. HANDBHANGASAMILBALADHIP
- 5. PURNACHANDRAPUR-1
- 6. SARASOLE
- 7. TIANSI
- FOREST
- VILLAGE

87°00'E



82°30'0"E

# KOMNA NUAPADA

CHUKTIA BHUNJIA  
TRIBE

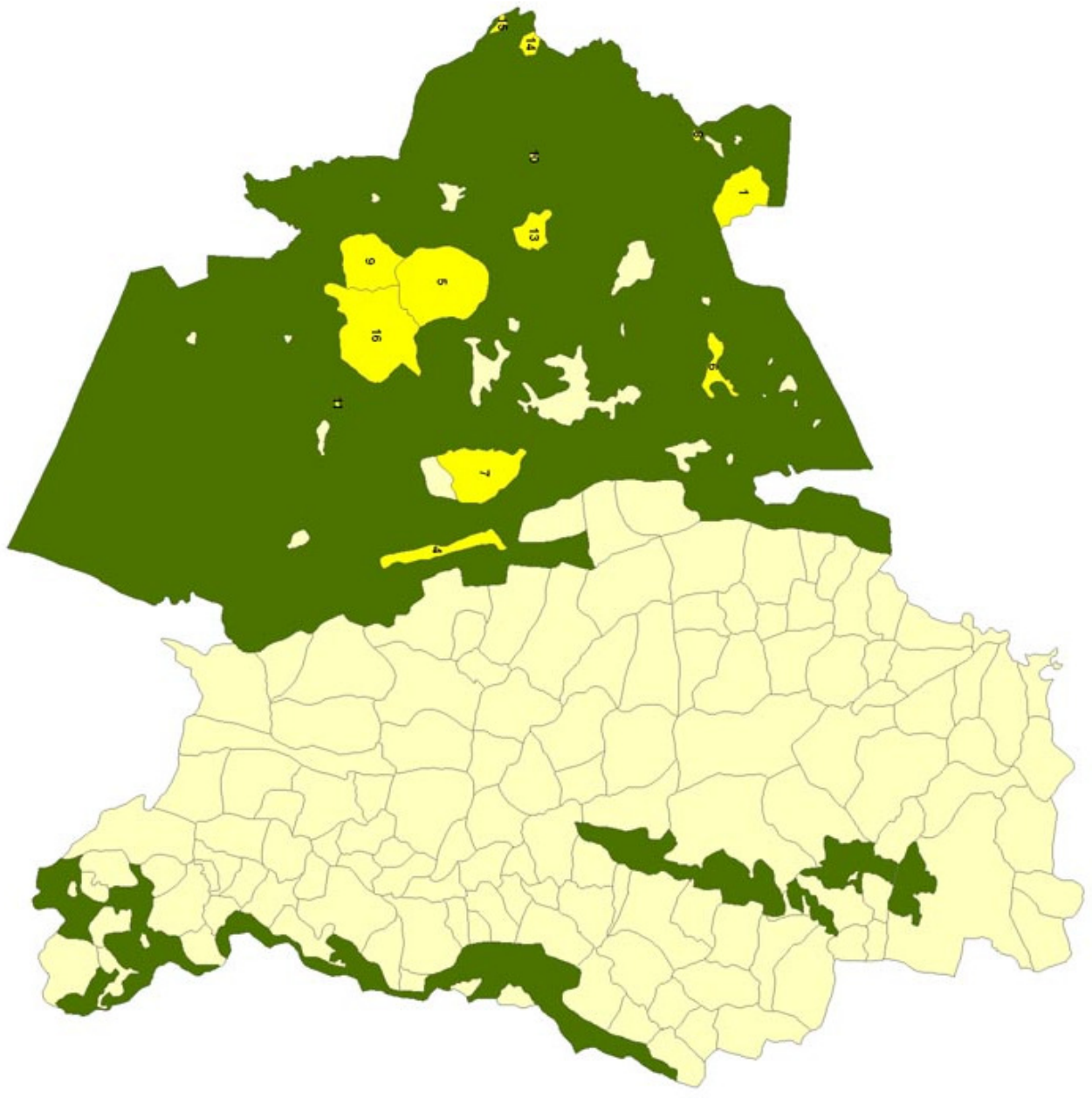


20°30'0"N

20°30'0"N

82°30'0"E

- LEGEND**
- 1. BHAOSIL
  - 4. CHEREICHUAKHOL
  - 5. GATIBEDA
  - 6. JALAMADAEI
  - 7. JAMGAON
  - 8. JHARLAMB
  - 9. JUNAPANI
  - 10. KAMARKHOL
  - 11. KOKED
  - 13. KOTRABEDA
  - 14. SIBANARAMPUR
  - 15. SIBANARAMPUR
  - 16. SUNAABEDA
  - FOREST
  - VILLAGE

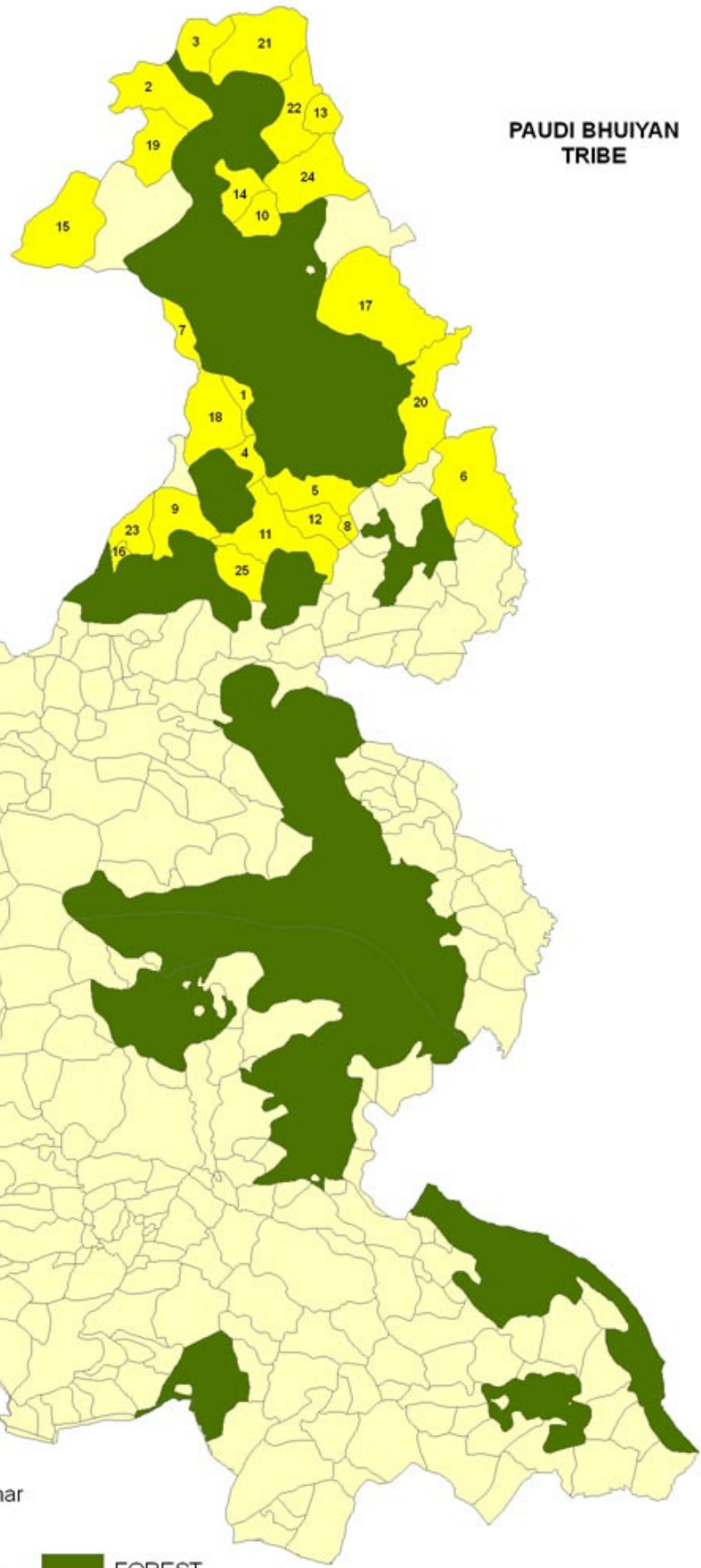




# PALLAHARA ANGUL

PAUDI BHUIYAN  
TRIBE

- 1, Bandhabhuin
- 2, Baradiha
- 3, Barundiha
- 4, Bhimakanda
- 5, Dudipani
- 6, Duipani
- 7, Ganeswarpur
- 8, Gopapur
- 9, ITI
- 10, Jallaha
- 11, Jamardiha (Panchunaika)



- 12, Jamardiha(PABUDI)
  - 13, Kadaminiapur
  - 14, Kaira
  - 15, Khadaka
  - 16, Krutibasapur
  - 17, Nagira
  - 18, Patamunda
  - 19, Rada
  - 20, Rugudidiha
  - 21, Salei
  - 22, Sandhar
  - 23, Siaria
  - 24, Sibida
  - 25, Timi
- FOREST  
VILLAGE



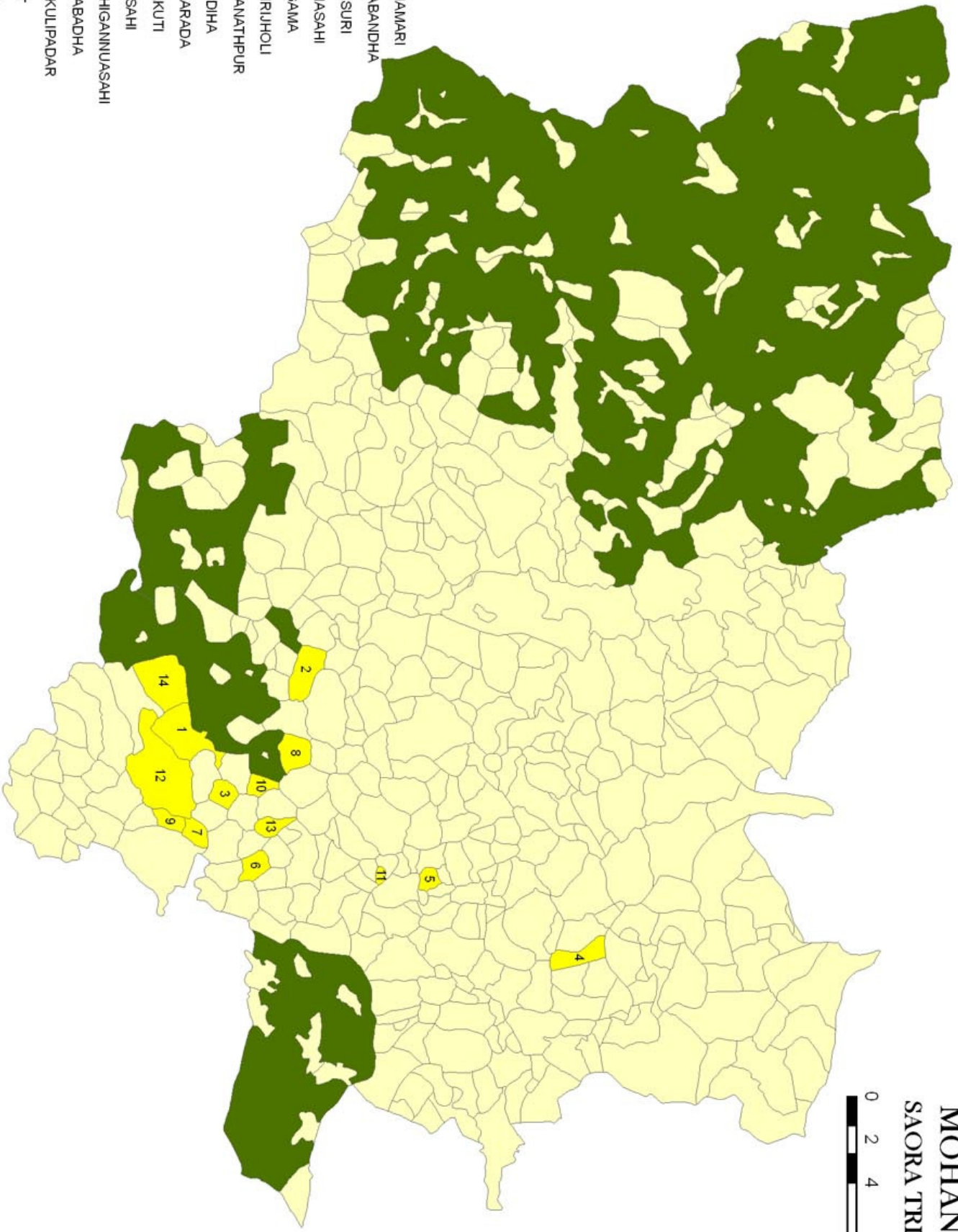


# MOHANA SAORA TRIBE



## Legend

- 1. BAGHAMARI
- 2. BARIABANDHA
- 3. BAUNSURI
- 4. BHALLASAHU
- 5. DENGAMA
- 6. DHIMIRUHOLI
- 7. JAAGANATHPUR
- 8. JAMUDHA
- 9. KANKARADA
- 10. NILAKUTI
- 11. NUASAHU
- 12. PADHIGANNUASAHU
- 13. POLABADHA
- 14. SANKULIPADAR
- FOREST
- VILLAGE

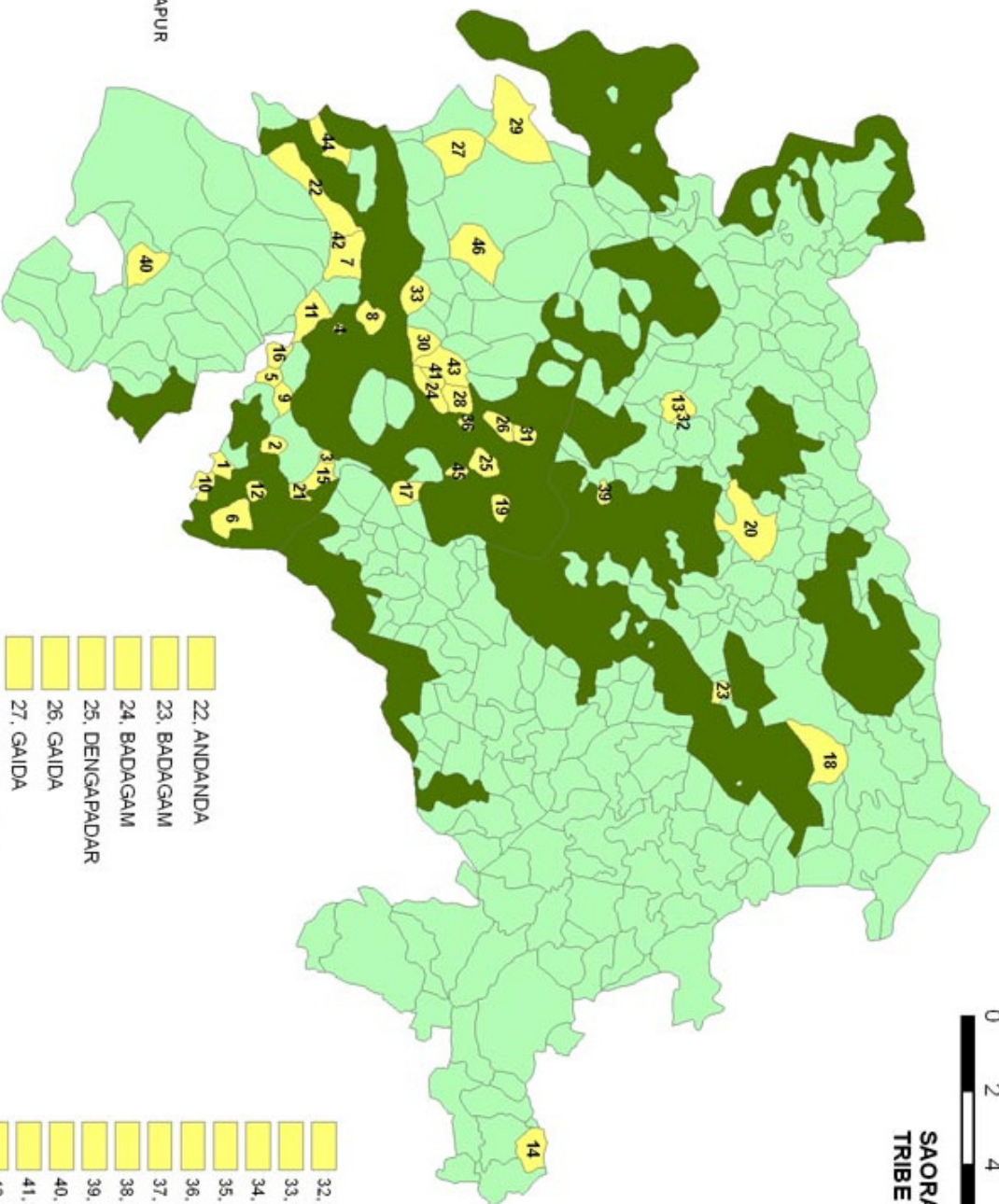




0 2 4 8  
KM

### PATRAPUR GANJAM

SAORA  
TRIBE



### LEGEND

- 1. BADAJHOLA
- 2. BANAPUR
- 3. BHALIABADA
- 4. BHALIASAHI
- 5. BURASAHI
- 6. GANGAPUR
- 7. GUJULINGI
- 8. GURUDA
- 9. LOKASAHI
- 10. PHATAKASINGI
- 11. PURIASAHI
- 12. RAMACHANDRAPUR
- 13. SARADHAPUR
- 14. SARADHAPUR
- 15. SARADHAPUR
- 16. SINDURABADA
- 17. SUNARIBADA
- 18. THANAGAM
- 19. THANAGAM
- 20. TTIGAM
- 21. TTIGAM

- 22. ANDANDA
- 23. BADA GAM
- 24. BADA GAM
- 25. DENGAPADAR
- 26. GAIDA
- 27. GAIDA
- 28. HALADIBADA
- 29. HALADIBATA
- 30. HARIDAPATU
- 31. JHAMPURIMUSA

- FOREST
- VILLAGE

- 32. MAHALIMBA
- 33. MAHALIMBA
- 34. MAHULABADA
- 35. MAHULABADA
- 36. MAHULABADA
- 37. MAHULAPADA
- 38. MAHULAPADA
- 39. SANAGAM
- 40. SANAGAM
- 41. SANGAM
- 42. SAPUAKHETA
- 43. TABALASAHI
- 44. TADING
- 45. THALEBADA
- 46. TITRISINGI

- Daleiblia
- Nakadandia
- Kashikhole
- Dhepesahi
- Bhogibandha